

PREMIUM TIRE CHANGER

**monty**<sup>®</sup>  
TIRE CHANGING SYSTEMS

**8100S**



**HOFMANN**<sup>®</sup> 

8100S



# ***MONTY® 8100S DESIGNED WITH OUR CUSTOMERS IN MIND.***

The *monty* 8100s center post tire changer is designed for easy use with minimal training of technicians reducing shop overhead and adding to your bottom line. Traditional center post design coupled with Hofmann's innovative feature set makes this tire changer highly productive and reduces the risk of wheel damage.

## ***HIGH-PRODUCTIVITY. EASY-TO-USE.***

### **SWING ARM STYLE MOUNT/DEMOUNT**

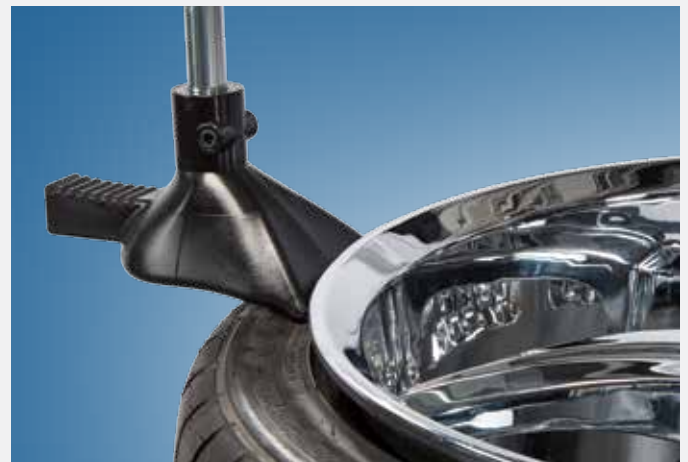
- Traditional mounting head with tire lever
- Quick change design, non-marring plastic and metal mount/demount tools included

### **BEAD PUSHER/TIRE LIFTING TOOL**

- Integrated bead pusher assists in the mount/demount process of the upper bead
- Tire lifting tool aids the technician with the demounting process



Swing Arm Style Mount/Demount



Bead Pusher/Tire Lifting Tool



### HAND ACTIVATED BEAD BREAKER

- Side mounted bead breaker
- Thumb switch activation at the point of use

### SMART SPEED

- Rotational speed maximized by automatic inverter control
- Variable from 7 RPM to 18 RPM offering the highest possible speed for maximum productivity

### CENTER POST CLAMP DESIGN

- Reduces risk of wheel damage
- Accommodates a wider range of wheel sizes

### INTEGRATED WHEEL LIFT

- Assists technicians with lifting and positioning heavy tires/wheels on the machine
- Integrated roller board eases bead breaking



Hand Activated Bead Breaker



Center Post Clamp Design

## TECHNICAL SPECIFICATIONS\*

<b>Part number</b>	EEWH768AC
<b>Vehicles supported</b>	Passenger car / light truck / SUV
<b>Tower type</b>	Manual Swing Arm
<b>Wheel specifications</b>	
<b>Maximum tire diameter</b>	44" (112cm)
<b>Maximum tire width (Normal Rim)</b>	15" (38cm)
<b>Maximum rim width (Normal Rim)</b>	14" (36cm)
<b>Reverse rim clearance</b>	15" (38cm)
<b>Mounting head range (Rim Diameter)</b>	12" - 30" (30.5 - 76cm)
<b>Height of the pilot hole top flange</b>	32" (81cm)
<b>Wheel lift specifications</b>	
<b>Wheel lift</b>	Yes
<b>Capability</b>	154lbs (70kg)
<b>Technology</b>	Pneumatic
<b>Operated by</b>	Foot Switch
<b>Platform height</b>	1.18" (3cm) with roller bead
<b>Roller board</b>	Yes
<b>Others</b>	
<b>Dimensions L x W x H</b>	58" x 40" x 76" (147 x 102 x 193cm)
<b>Power supply</b>	230V 1ph 50/60Hz 17A
<b>Installed motor power</b>	1 hp 0.9 kW
<b>Maximum air pressure allowed</b>	174 PSI (12 bar)
<b>Maximum air pressure required</b>	116 PSI (8 bar)
<b>Temperature range</b>	30° - 122° F (0° - 50° C)

## STANDARD ACCESSORIES

Smart bead spacer	Plastic rim protector
Plastic protector bead breaker shovel	Plastic tire protection
Lube brush & paste bucket	Mounting head protection
Quick exchange toolkit	Tire lever
Hub cones	

## OPTIONAL ACCESSORIES



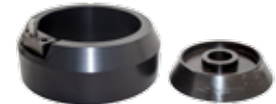
Pneumatic Bead Assist  
(EAK0317G91A)



Bead Holding Clamp  
(EAA0247G70A)



Roller Mounting Help Tool  
(EAA0304G48A)



Light Truck Wheel Kit  
(EAA0349G06A)



Reverse Mount Wheel Adapter Kit  
(EAA0364G00A)

For more information regarding the monty™ 8100S, call 800.251.4500 (US) or 501.505.2662 (Canada) [www.hofmann-usa.com](http://www.hofmann-usa.com) / [www.hofmann.ca](http://www.hofmann.ca)

Hofmann is committed to product innovation and improvement. Therefore, specifications listed in this sell sheet piece may change without notice. ©2016 Snap-on Incorporated. Hofmann is a trademark, registered in the United States and other countries, of Snap-on Incorporated. All rights reserved. All other marks are marks of their respective holders.  
07/16 SS153525B